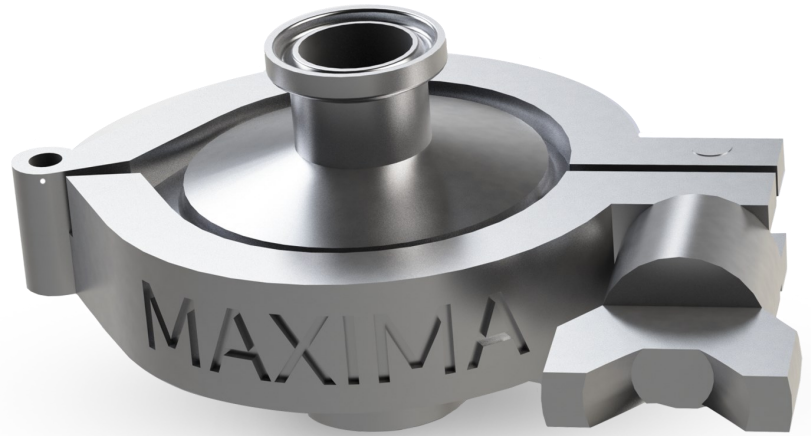


# Thermostatic Clean Steam Trap

Premium Quality  
FDA Compliant



Features	Details	Benefits
<b>Stainless Steel Construction</b>	<ul style="list-style-type: none"><li>• 316 L stainless steel housing and internals</li></ul>	<ul style="list-style-type: none"><li>• SS 316 L construction makes it FDA compliant</li></ul>
<b>Self Drainability</b>	<ul style="list-style-type: none"><li>• The entire design is crevice free</li></ul>	<ul style="list-style-type: none"><li>• Eliminates the possibility of any bacteria formation</li></ul>
<b>Mirror Polished</b>	<ul style="list-style-type: none"><li>• The wet parts are polished to less than 0.4 RA</li><li>• Outer surface finish is less than 0.8 RA</li></ul>	<ul style="list-style-type: none"><li>• Improves corrosion resistance</li><li>• Ensures better cleaning</li><li>• Eliminates bacteria growth</li></ul>
<b>Compact Sanitary Design</b>	<ul style="list-style-type: none"><li>• Sanitary trap with tri clamp</li></ul>	<ul style="list-style-type: none"><li>• Easy to install and maintain</li></ul>
<b>High Orifice Size</b>	<ul style="list-style-type: none"><li>• Ensures high volumes of air venting in quick time</li></ul>	<ul style="list-style-type: none"><li>• Minimises start-up time</li></ul>
<b>Condensate Removal Near Saturated Temperature</b>	<ul style="list-style-type: none"><li>• Ensures no condensate holdup</li></ul>	<ul style="list-style-type: none"><li>• Faster batch time</li><li>• Reduces fuel consumption</li></ul>
<b>Electropolished Trap</b>	<ul style="list-style-type: none"><li>• 100% electropolished trap</li></ul>	<ul style="list-style-type: none"><li>• Electropolish reduces bacteria growth</li></ul>

Maxima's MCT7 thermostatic traps are specifically designed for clean steam applications for low to medium condensate load. These traps are designed in accordance with ASME standards for material of construction, surface finish, drainability, markings and documentation.

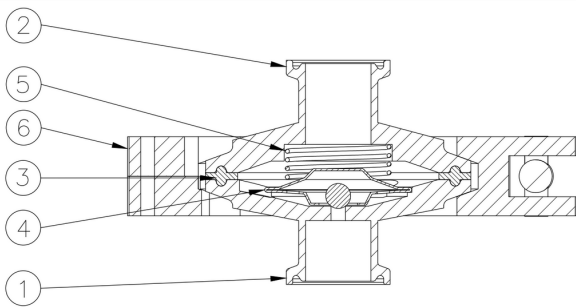
**Working principle:** These traps have a thermostatic capsule which expands and contracts on temperature variations. During startup, these capsules are contracted which ensures all air & gases to vent from the system. No sooner steam enters into the system, the thermostatic capsules expands, ensuring sealing to the seat and no discharge of steam from the system.

# MCT7 Series



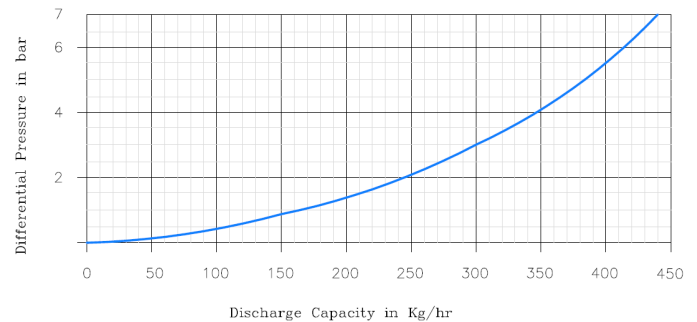
## Specifications

<b>Sizes</b>	15, 20, 25 NB
<b>MOC</b>	SS 316L
<b>End Connections</b>	Tri Clover (Sanitary) Clamp
<b>Max Operating Pressure</b>	7 Bar (G)
<b>Max Allowable Pressure</b>	10 Bar (G)
<b>Max Operating Temperature</b>	Saturation Steam Temperature
<b>Max Allowable Temperature</b>	170 Deg C



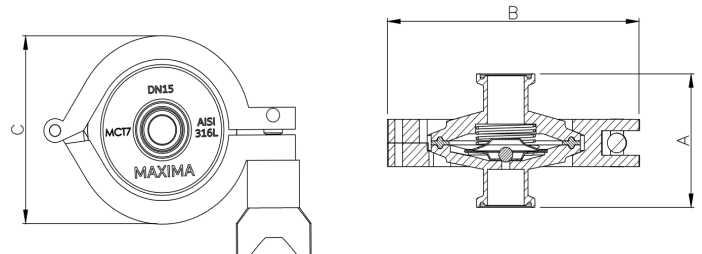
<b>1 Body</b>	AISI 316 L
<b>2 Cover</b>	AISI 316 L
<b>3 Cover Gasket</b>	PTFE
<b>4 Bellow Assembly</b>	AISI 304
<b>5 Spring</b>	AISI 316 L
<b>6 Clamp</b>	AISI 304

## Discharge Capacity Chart



## Installation & Maintenance

- Trap has to be installed in vertical direction with top inlet
- Flushing of the lines before putting the trap into operation
- Follow the flow direction arrow on the trap
- Trap should not be exposed to super heated conditions



Size	A	B	C	Wt
	mm	mm	mm	kg
<b>DN 15, DN 20</b>	54	108	76	0.691

Since 1986, Maxima Boilers has been one of the leading boiler manufacturers in India, focused on providing customers across the world with a wide range of steam solutions. Our Maxima Steam Works division offers complete steam solutions for your plant. Our product range includes:

**Steam Boilers | Solid Fired Boilers | Small Industrial Boilers | Thermic Fluid Heaters | Hot Water Boilers  
Waste Heat Recovery Boiler | Steam Generators | Coil Type Boilers | Steam Accumulators | Pressure  
Reducing Stations | Temperature Control Systems | Thermodynamic Traps | Piston & Globe Valves  
Steam Traps | Condensate Recovery Systems | Pipeline Accessories | Efficiency Monitoring Systems  
Thermostatic Traps | Ball Float Traps | Pumping Traps | Automatic Blowdown Control Systems**

**Maxima Steam Works** Gat 100, Jyotiba Nagar, Near Hotel Zunka, Talawade, Pune 411062,  
Maharashtra, India | **Email:** sales@maximasteamworks.com | **Website:** maximasteamworks.com

The information presented in this brochure is for representative purposes only and we reserve the right to change specifications and designs without notice.