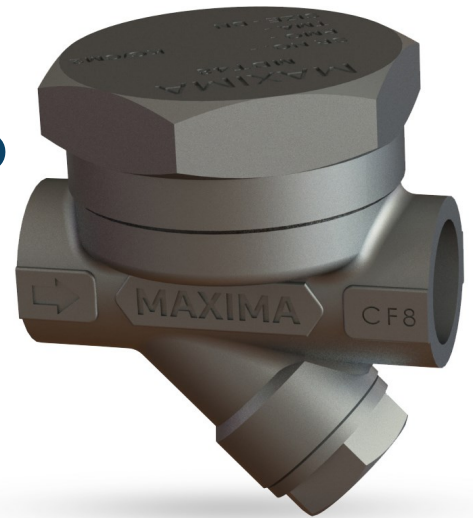


# All Weather Thermodynamic Steam Trap

Easy Maintenance  
Long Lasting



\* Design Registration Application No: 356085 - 001

Features	Details	Benefits
All Weather Trap	<ul style="list-style-type: none"><li>• Inbuilt Steam Jacketing</li></ul>	<ul style="list-style-type: none"><li>• Reduces Steam Loss in Rainy/ Cold/ Windy Weather Conditions</li></ul>
Long Life Trap	<ul style="list-style-type: none"><li>• Austenitic SS 304</li><li>• Inbuilt Steam Jacketing</li><li>• Vacuum Hardened Seat</li></ul>	<ul style="list-style-type: none"><li>• Corrosion Free Construction</li><li>• Reduces Operation Cycle, Thereby Longer Life</li><li>• Ensures Even Hardness, Thereby Longer Life</li></ul>
Maintainable Seat & Disc	<ul style="list-style-type: none"><li>• Online Seat and Disc Replacement</li></ul>	<ul style="list-style-type: none"><li>• Reduces Maintenance Cost</li><li>• Below 10 Minutes Maintenance Time</li><li>• Need To Replace Seat and Disc Instead Of Entire Trap</li></ul>
Trap Performance	<ul style="list-style-type: none"><li>• Three Port Design</li></ul>	<ul style="list-style-type: none"><li>• Ensures Superior Trap Performance over Single Port Design</li><li>• Reduces Trap Maintenance</li></ul>

## Installation & Maintenance

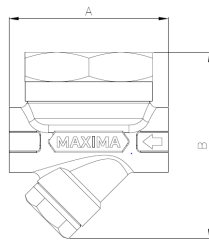
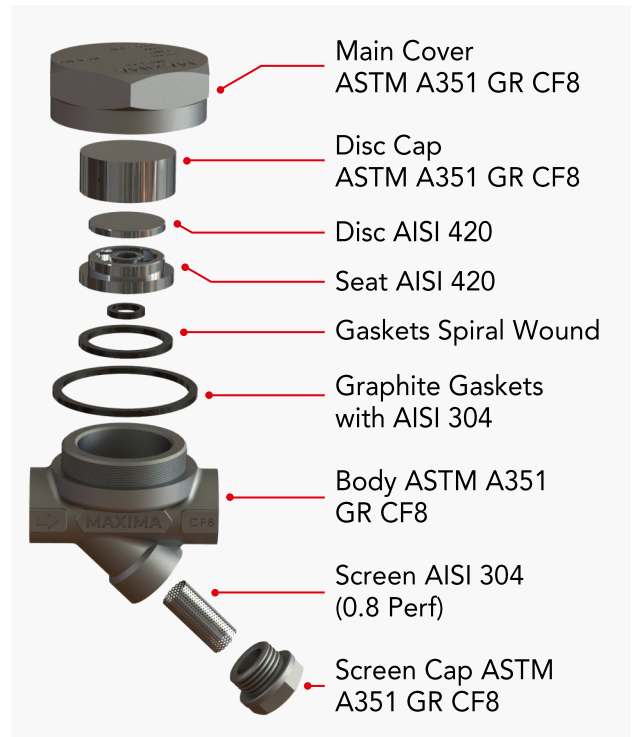
- Can be installed in any direction but preferably with cap on the top
- Ensure back pressure is not more than 80% of inlet pressure
- Trap to be installed with a proper drip leg
- Before commissioning, please ensure proper flushing of line
- Ensure trap is isolated before maintenance
- Periodically clean strainer screen, seat and disc
- In case of wear and tear on the seat of the disc, please replace with the spare kit

# MDT48 Series

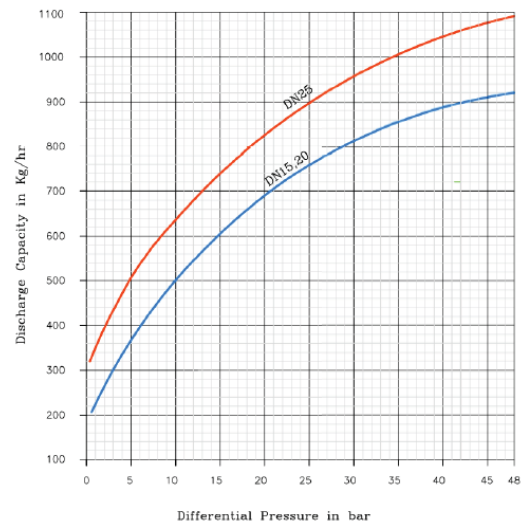


## Specifications

<b>Sizes</b>	15, 20, 25 NB
<b>MOC</b>	A351 GR CF8
<b>End Connections</b>	BSPT, BSP, NPT, SW, Flanged to 150, 300, 600
<b>Body Design Condition</b>	Class 600
<b>Max Operating Pressure</b>	48 Bar (G)
<b>Max Operating Temp.</b>	538 Deg C
<b>Limiting Back Pressure</b>	Should not exceed 80% of inlet pressure
<b>Cold Hydraulic Pressure</b>	96 Bar (G)



Size	A mm	B mm	Wt kg
15 NB	75	87.5	~ 1.0
20 NB	80	100	~ 1.2
25 NB	96	118	~ 1.5



Discharge Capacity Chart

Since 1986, Maxima Boilers has been one of the leading boiler manufacturers in India, focused on providing customers across the world with a wide range of steam solutions. Our Maxima Steam Works division offers complete steam solutions for your plant. Our product range includes:

**Steam Boilers | Solid Fired Boilers | Small Industrial Boilers | Thermic Fluid Heaters | Hot Water Boilers  
Waste Heat Recovery Boiler | Steam Generators | Coil Type Boilers | Steam Accumulators | Pressure Reducing Stations | Temperature Control Systems | Thermodynamic Traps | Piston & Globe Valves  
Steam Traps | Condensate Recovery Systems | Pipeline Accessories | Efficiency Monitoring Systems  
Thermostatic Traps | Ball Float Traps | Pumping Traps | Automatic Blowdown Control Systems**

**Maxima Steam Works** Gat 100, Jyotiba Nagar, Near Hotel Zunka, Talawade, Pune 411062, Maharashtra, India | **Email:** sales@maximasteamworks.com | **Website:** maximasteamworks.com

The information presented in this brochure is for representative purposes only and we reserve the right to change specifications and designs without notice.