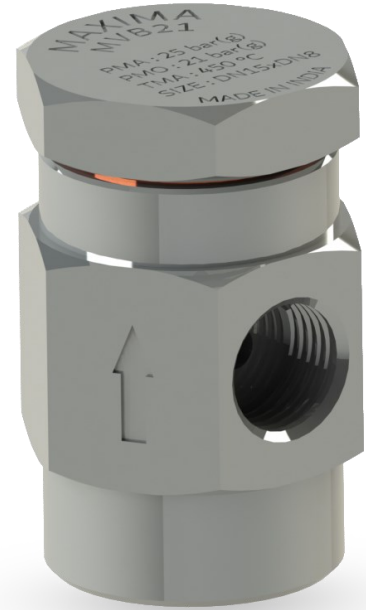


# Highly Responsive Vacuum Breaker

Leak Proof Design  
Paramount Safety



Maxima's MVB21 Vacuum Breaker Series is specifically designed to safeguard heat exchangers, jacketed vessels, kettles, serpentine systems against vacuum created due to condensation of the steam during the process. Due to steam condensation in these systems pressure suddenly decreases and in extreme conditions vacuums are created. The vacuum breaker breaks the vacuum by pushing air into the system.

Features	Details	Benefits
<b>Stainless Steel Construction</b>	<ul style="list-style-type: none"><li>Entire body and internals are of SS 304</li></ul>	<ul style="list-style-type: none"><li>Long life and corrosion free construction</li></ul>
<b>Highly Responsive</b>	<ul style="list-style-type: none"><li>Low differential pressure required to operate the vacuum breaker</li></ul>	<ul style="list-style-type: none"><li>Highest safety to the equipment</li></ul>
<b>Compact Design</b>	<ul style="list-style-type: none"><li>Screwed body and cap design</li></ul>	<ul style="list-style-type: none"><li>Easy to maintain and install the vacuum breaker</li></ul>
<b>Leak Proof Design</b>	<ul style="list-style-type: none"><li>Stainless steel ball and seat forms a leakproof design</li></ul>	<ul style="list-style-type: none"><li>Zero steam leak</li></ul>

### Installation & Maintenance

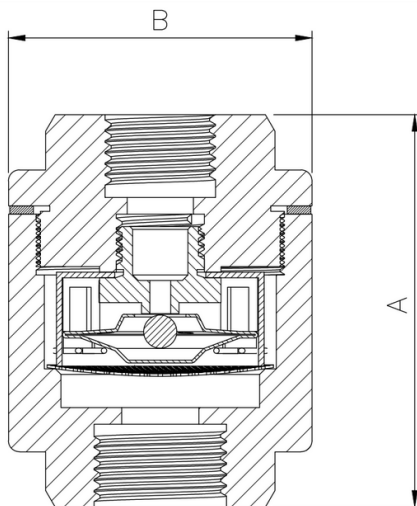
- To be installed on the highest points of the steam system
- Vacuum breaker have to be installed in the vertical position as per the arrow indication
- An isolation valve has to be provided before the vacuum breaker for enabling maintenance if required

# MVB21 Series

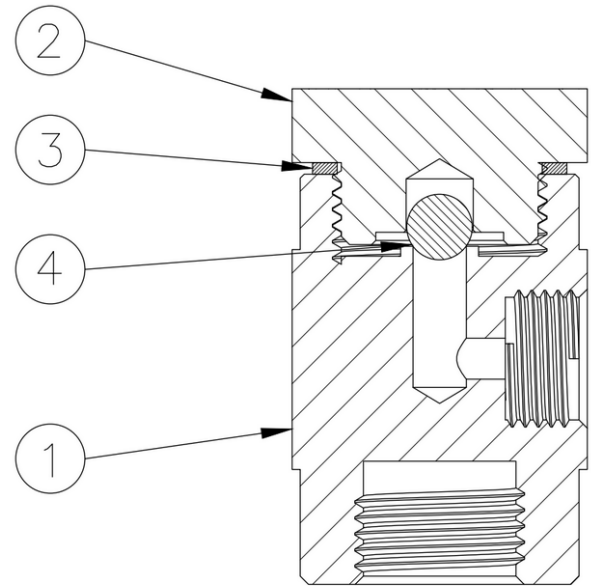


## Specifications

<b>Sizes</b>	15 , 20 NB
<b>MOC</b>	SS 304
<b>End Connections</b>	Screwed, BSPT, BSP, NPT
<b>Max Operating Pressure</b>	21 Bar (G)
<b>Max Allowable Pressure</b>	25 Bar (G)
<b>Max Allowable Temperature</b>	450 Deg C

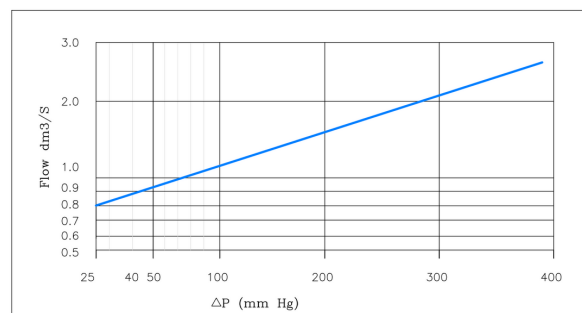


Size	A mm	B mm	Wt kg
DN 15	60	36	0.43



1	Body	AISI 304
2	Cover	AISI 304
3	Body Gasket	Copper
4	Ball	AISI 440 C

CAPACITY  
ΔP REQUIRED TO OPEN VACUUM BREAKER 4.6 mm Hg



Discharge Capacity Chart

Since 1986, Maxima Boilers has been one of the leading boiler manufacturers in India, focused on providing customers across the world with a wide range of steam solutions. Our Maxima Steam Works division offers complete steam solutions for your plant. Our product range includes:

**Steam Boilers | Solid Fired Boilers | Small Industrial Boilers | Thermic Fluid Heaters | Hot Water Boilers  
Waste Heat Recovery Boiler | Steam Generators | Coil Type Boilers | Steam Accumulators | Pressure Reducing Stations | Temperature Control Systems | Thermodynamic Traps | Piston & Globe Valves  
Steam Traps | Condensate Recovery Systems | Pipeline Accessories | Efficiency Monitoring Systems  
Thermostatic Traps | Ball Float Traps | Pumping Traps | Automatic Blowdown Control Systems**

**Maxima Steam Works** Gat 100, Jyotiba Nagar, Near Hotel Zunka, Talawade, Pune 411062, Maharashtra, India | **Email:** sales@maximasteamworks.com | **Website:** maximasteamworks.com

The information presented in this brochure is for representative purposes only and we reserve the right to change specifications and designs without notice.